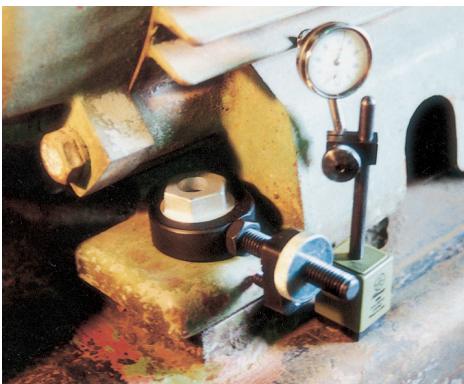




Posi Lock SIDE ALIGN

WHY SIDE ALIGN?

Portable Side Align sets make aligning motors, pumps and gear boxes safe, quick and easy. The sets also eliminate the use of jack bolts, frames and heavy hammers to try to move equipment to the tolerances demanded. Side Align sets provide the means to offer precise movement and work hand-in-hand with the current methods of providing precise measurements. The Posi Lock Undercut Bolt Sets will virtually eliminate the problem of "Bolt Binding."



The market for these products encompasses all companies which own, service, install or maintain coupled rotating equipment. Perspective customers can be found within the following industries:

Mining
Construction
Manufacturing

Transportation
Electric and Gas
Nuclear Plants

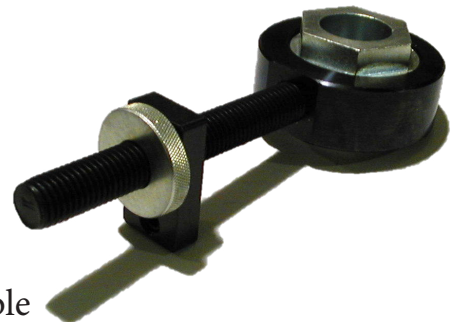
Hotels
Hospitals
Education

The following vertical markets have historically represented the greatest potential for multiple unit sales of shaft alignment systems:

Power Generation
Chemical Processing
Pulp and Paper

Petroleum Refining
Steel and Aluminum
U.S. Navy/Air Force

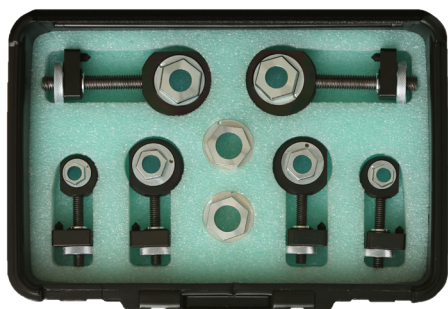
The Posi Lock Horizontal Alignment can align to .001" and closer versus the primitive method of using a heavy hammer or bumping bar to hit the motor at the feet and keep hitting back and forth until it is as close as you can get it. It is a portable and precise method of causing side to side movement of equipment.





HORIZONTAL ALIGNMENT TOOL SETS

Portable Side Align sets make aligning your motors, pumps and gear boxes safe, quick, easy and to the tolerance you demand. Eliminate the use of jack bolts, frames and heavy hammers.



AT-1104

2-300 HP

Securing bolt sizes: $\frac{3}{8}$ to $\frac{3}{4}$ in.

Weight: 12 lbs.



AT-1108

2-300+ HP

Securing bolt sizes: $\frac{3}{8}$ to $1\frac{1}{4}$ in.

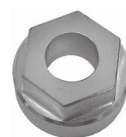
Weight: 32 lbs.

ALIGNMENT TOOL RANGE				ECCENTRIC SOCKET SIZES				MOTOR APPLICATION RANGE		
Model	Qty in Set	Tool Range		Actuator Socket Required	Qty in Set	Actuator Socket Size	Stud Hole Size	Power Range	AC Motor Frame	DC Motor Frame
Alignment Tool Sets - Standard										
AT-1108 Set	ATN-1	2	13/16 to 1 5/8 in.	ES-1	2	9/16 in.	3/8 in.	2-30 HP	182-286TS	182A-288A
	ATN-2	2	7/8 to 2 in.	ES-2	2	3/4 in.	1/2 in.			
	ATN-3	2	7/8 to 2 5/8 in.	ES-3	2	15/16 in.	5/8 in.	20-300 HP	324T-449TS	323A-368A
				ES-4	2	1 1/8 in.	3/4 in.			
	ATN-4	2	1 1/2 to 4 1/2 in.	ES-5	2	1 5/16 in.	7/8 in.	300+ HP	5040-505S	403A-448A
				ES-6	2	1 1/2 in.	1 in.			
	ATN-5	2	1 7/8 to 6 1/8 in.	ES-7	2	1 11/16 in.	1 1/8 in.	300+ HP	400M-8211S	503A-688A
				ES-8	2	1 7/8 in.	1 1/4 in.			
AT1104 Set	ATN-1	2	21 to 42 mm	MES-1	2	13 mm	8 mm	1-22 kW	80-132	132-180
	ATN-2	2	22 to 51 mm	MES-2	2	17 mm	10 mm			
	ATN-3	2	22 to 67 mm	MES-3	2	19 mm	12 mm	14-224 kW	160-225	200-225
				MES-4	2	24 mm	16 mm			

Alignment Tool



Eccentric Socket



Top View

Bottom View

